

Friends of Sydenham Park - Concept Plan

Nature Reserve:

- Wallabies, native birds, indigenous trees and native grasslands
- Visit the billabong at the confluence of the Maribyrnong River, Jacksons Creek and Deep Creek
- Nature Walks throughout park
- Bicycle trails – to connect with Organ Pipes National Park and the Maribyrnong Trail
- Zip Line (Flying Fox) over ravine



Sporting Precinct:

- Best Practice Sport and Wellness Centre for Female Sports
- Location for full size football ovals or soccer fields
- Centrally located Carpark and amenities facility Room for additional sporting facilities and future growth
- Location of General Sports including Tennis, Bocce etc.



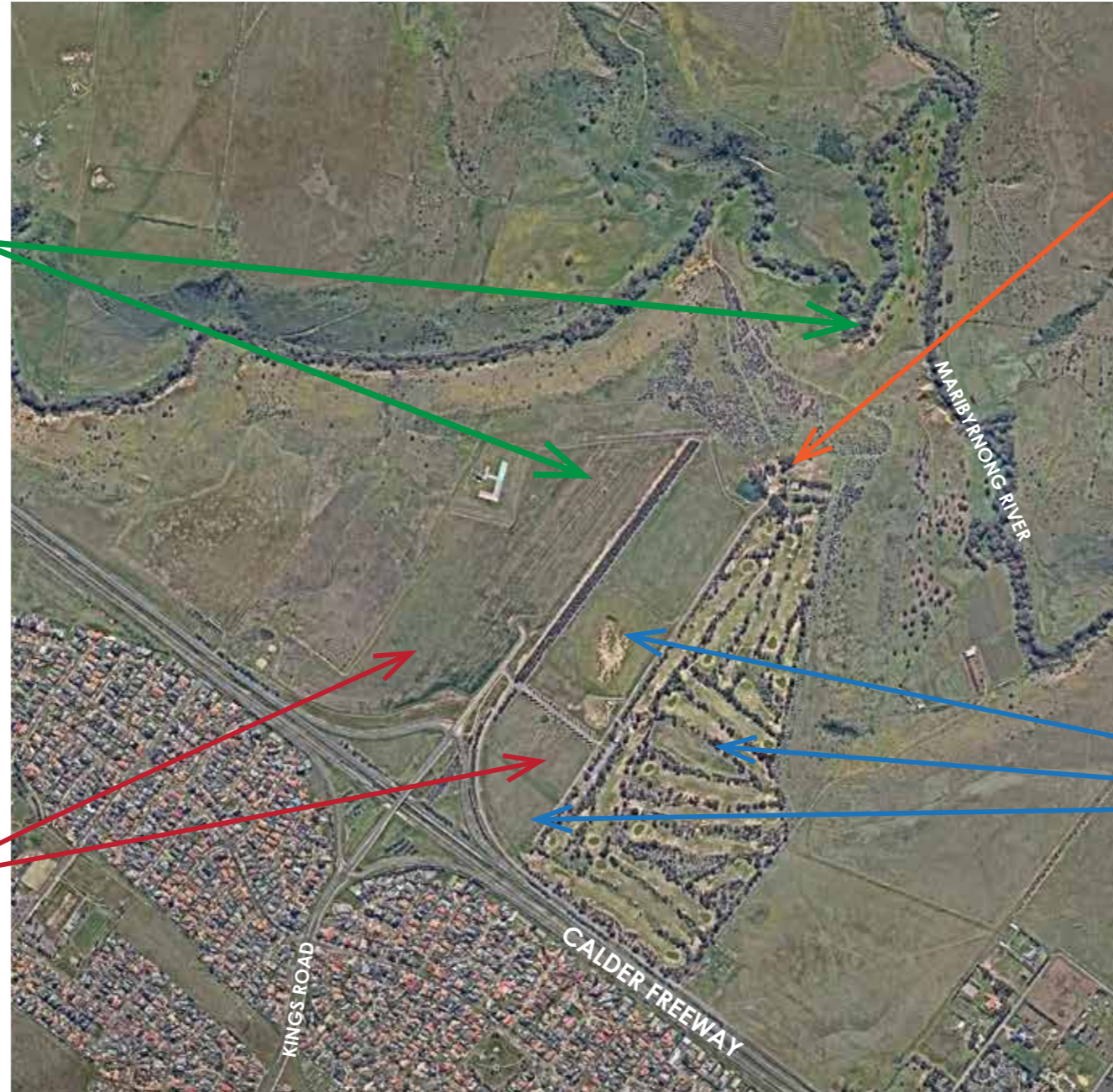
Tourist Precinct:

- Historic Robertson's Homestead – Social Enterprise Café
 - Aboriginal Theme – Local Aboriginal Heritage Information and Cultural Display
- Viewing Platform – Aircraft Movement – River Valley Views – Melbourne Airport - City Skyline
- Early Settler Museum – Display of agricultural artefacts and farming techniques
- Megafauna Display – Life size statues and information
 - Australia's first soda water drinking fountain
- Relocate the existing golf course maintenance workshop area adjoining Robertson's Homestead to improve the tourism precinct and make way for additional tourism related facilities
 - Mini Golf



Golf and Community Open Space Precinct

- Community Open Space for festivals, passive recreation, entertainment and other activities
- Existing Golf Course, relocation of driving range and new activities such as mini-golf
- Large Electronic Advertising Board – Located near Calder Freeway providing information about events
 - Location of General Sports including Tennis, Bocce etc.
- Location for the hire of electric mountain bikes to tour the Park
 - Sky port
- Possible location of Matilda's or other major sporting club
- Ancillary use such as accommodation in association with the golf course



The Jewel in the Crown

Friends of Sydenham Park - Design Details



The Jewel in the Crown